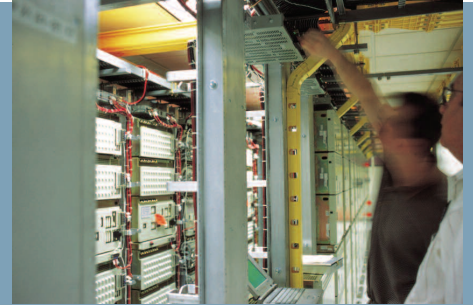


## Senator 25

### High Sensitivity Smoke Detector



#### Key Features

- Ultra small low cost aspirating smoke detector for easy and discreet installation.
- High sensitivity provided by laser based forward light scatter for reliable early warning.
- Single sampling pipe up to 50m in length (still air).
- Unique ClassiFire-3D<sup>®</sup> Perceptive Artificial Intelligence System.
- Laser Dust Discrimination (LDD) with a patented dust management and separator system.
- RS485 communications built in as standard for networking and remote communications.

#### Description

Senator 25 is designed to provide very high sensitivity smoke detection in a small package.

ClassiFire-3D is the most comprehensive intelligence found in a smoke detection system to date and ClassiFire-3D ensures that the detector operates at optimum sensitivity for the protected environment, without the need for complex setup.

The detector is designed to fit into a Docking Station. All sampling pipes and cables are connected to the Docking Station as a first fix operation leaving the detector to be fitted during the final commissioning phase if required. This ensures that detectors are less likely to be damaged during the installation.

Upgradable volt-free Fire and Fault relay outputs are available for remote monitoring by local fire detection or BMS systems.

#### Applications

This type of detector has been successfully applied in thousands of installations worldwide, ranging from Clean Rooms to Casinos.

#### Options Available

- Addressable Protocol Interface Cards APIC<sup>™</sup> available for most popular industry signalling protocols.
- Command Module available for central monitoring and display.
- SenseNet compatible - up to 127 detectors per loop.
- Remote Display units available.

#### Approvals

- Approved/listed by most major international fire protection certification agencies

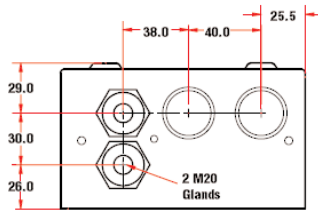
#### Applications

- Data Storage Units
- Air Conditioning Units
- Plant Rooms
- Computer Rooms
- Equipment Racks
- Prison Cells
- Air Ducts
- Heritage Properties
- Motor Rooms

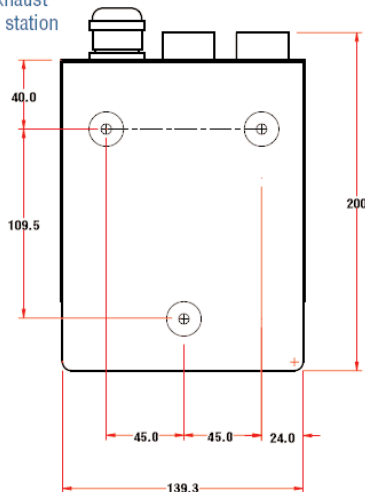


## Senator 25 - Technical Specification

Supply Voltage	21.6-26.4V DC
Dimensions	140w x 200h x 85d (mm)
Weight	1.85kg
Temperature range	-10 to +60°C
Humidity	0-90% Non-condensing
Sensitivity	25 - 0.03 % obscuration/metre
Display resolution	0.0015
Principle of operation	Laser scatter mass detection
Particle sensitivity range	0.003 - 10 microns
Dust discrimination	Digital filtering
Current consumption	250mA
Relay contact rating	10VA (410mA @ 24V DC)
Max pipe length	50m still air, 25m moving air
Pipe inlets	1
Pipe internal diameter	15-25mm
Pipe outside diameter	26.0 - 26.5mm without adaptors
Alarm levels	1 Alarm + Fault relays fitted as standard 4 Alarm + Fault available
Chamber service intervals	More than 8 years
Filter life	Typically 2-3 years, dependent on environment
Case IP rating	IP50
Programming	PC via RS232/RS485 or Command Module
Network	RS485 @ 9600 Baud



Dimensions of piped exhaust docking station



Leave 80mm clearance at top and bottom of docking station for access



Kidde Fire Protection operates a continuous programme of product development. The right is therefore reserved to modify any specification without prior notice and Kidde Fire Protection should be contacted to ensure that the current issues of all technical data sheets are used.

### Kidde Fire Protection

Thame Park Road, Thame, Oxfordshire OX9 3RT

Tel: +44 (0)1844 265003. Fax: +44 (0)1844 265156. E-mail: [general.enquiries@kiddeuk.co.uk](mailto:general.enquiries@kiddeuk.co.uk)

Web: [www.kfp.co.uk](http://www.kfp.co.uk)